

Poster presentation

Open Access

Biophysical cortical column model for optical signal analysis

Sandrine Chemla*¹, Frederic Chavane², Thierry Vieville¹ and Pierre Kornprobst¹

Address: ¹Odyssee Lab, INRIA Sophia-Antipolis, France and ²DyVa Team, INCM CNRS, UMR 6193, France

Email: Sandrine Chemla* - Sandrine.Chemla@sophia.inria.fr

* Corresponding author

from Sixteenth Annual Computational Neuroscience Meeting: CNS*2007
Toronto, Canada. 7–12 July 2007

Published: 6 July 2007

BMC Neuroscience 2007, 8(Suppl 2):P140 doi:10.1186/1471-2202-8-S2-P140

© 2007 Chemla et al; licensee BioMed Central Ltd.

We propose a biological cortical column model, at a mesoscopic scale, in order to explain and interpret biological sources of voltage-sensitive dye imaging signal. The mesoscopic scale, corresponding to a micro-column, is about 50 μm . The proposed model takes into account biological and electrical neural parameters of the laminar cortical layers. Thus we choose a model based on a cortical micro-circuit, whose synaptic connections are made only between six specific populations of neurons, excitatory and inhibitory neurons in three main layers, following [1]

and [2]. For each neuron, we use a conductance-based single compartment Hodgkin-Huxley neuron model [3].

We claim that our model will reproduce qualitatively the same results as the optical imaging signal based on voltage-sensitive dyes, which represents the summed intracellular membrane potential changes of all the neuronal elements at a given cortical site [4]. Furthermore, this voltage-sensitive dye imaging has a submillisecond temporal resolution that allows us to explore the dynamics of corti-

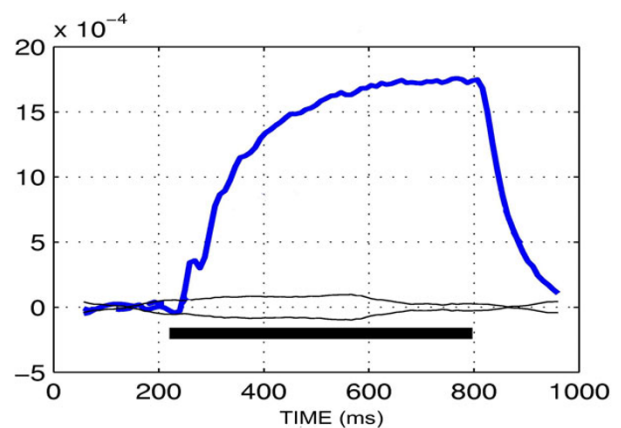
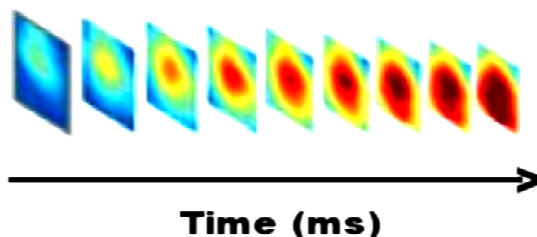


Figure 1

Voltage-sensitive dye optical imaging allows a real-time visualization of large neuron populations activity. Left: Temporal evolution of the dye optical signal. Right: Response curve in one position of the map, same time scale.

cal processing. An example of data of V1 dye-signal in a cat, after a visual local stimulation, is shown in Figure 1. Therefore, the temporal dynamics of the measured signal will be carefully studied as being of primary interest for the proposed model identification.

Methods

We use the NEURON software to implement our cortical column model of about 10^2 neurons and run simulations. Larger-scale models are going to be developed with the event-based simulator MVASPIKE, or with a specific optimal software, thanks to PyNN.

References

1. Haeusler S, Maass W: **A statistical analysis of information-processing properties of lamina-specific cortical microcircuit models.** *Cerebral Cortex* 2006.
2. Jancke D, Chavane F, Naaman S, Grinvald A: **Imaging cortical correlates of illusion in early visual cortex.** *Nature* 2004, **428**:423-426.
3. Dextexhe A, Rudolph M, Fellous J-M, Sejnowski TJ: **Fluctuating synaptic conductances recreate *in vivo*-like activity in neocortical neurons.** *Neuroscience* 2001, **107**:13-24.
4. Shoham D, Glaser DE, Arielli A, Kenet T, Wijnbergen C, Toledo Y, Hidesheim R, Grinvald A: **Imaging cortical dynamics at high spatial and temporal resolution with novel blue voltage-sensitive dyes.** *Neuron* 1999, **24**:791-802.

Publish with **BioMed Central** and every scientist can read your work free of charge

"BioMed Central will be the most significant development for disseminating the results of biomedical research in our lifetime."

Sir Paul Nurse, Cancer Research UK

Your research papers will be:

- available free of charge to the entire biomedical community
- peer reviewed and published immediately upon acceptance
- cited in PubMed and archived on PubMed Central
- yours — you keep the copyright

Submit your manuscript here:
http://www.biomedcentral.com/info/publishing_adv.asp

