

POSTER PRESENTATION

Open Access

Simulation platform: cloud-computing meets computational neuroscience

Tadashi Yamazaki¹, Hidetoshi Ikeno², Yoshihiro Okumura³, Shunji Satoh⁴, Yoshimi Kamiyama⁵, Yutaka Hirata⁶, Keiichiro Inagaki⁷, Akito Ishihara⁸, Takayuki Kannon⁹, Shiro Usui^{3,9*}

From Twentieth Annual Computational Neuroscience Meeting: CNS*2011
Stockholm, Sweden. 23-28 July 2011

Computational models and theoretical tools are essential components in computational neuroscience. A number of models and tools have been developed and registered at various online databases such as ModelDB and J-Node Platforms. Yet, the reuse of such resources still remains quite difficult. For example, to carry out a computer simulation of a model, we have to download the program from the database, extract, read instructions, compile if the program is written in a general programming language such as C, install the appropriate neural simulator if it is written for a simulator such as GENESIS, NEURON, and NEST, and finally we may be

ready to do it, if no problems occurs during all the setup mentioned above. How can we avoid this hustle?

As a solution of it, we introduce a cloud-based system for online computer simulation called Simulation Platform. Simulation Platform is a cloud of virtual machines running GNU/Linux. On a virtual machine, various software including developer tools such as compilers and libraries, popular neural simulators, and scientific software such as Gnuplot, R and Octave, are pre-installed. When a user posts a request, a virtual machine is assigned to the user, and the simulation starts on that machine. The user can remotely access the virtual

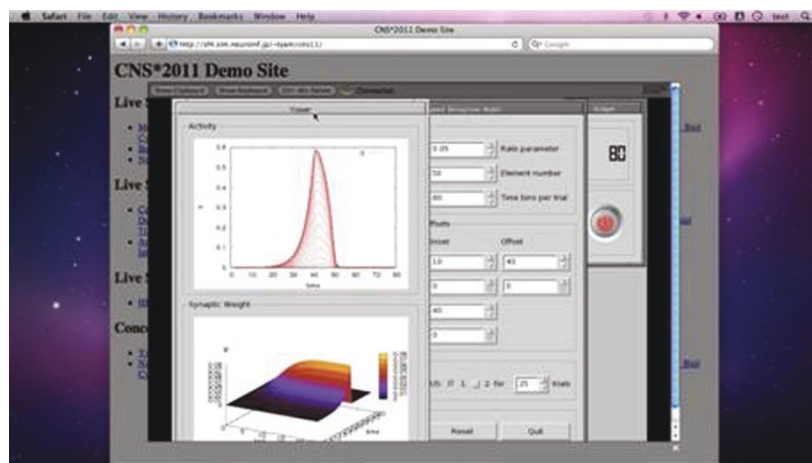


Figure 1 A screenshot of a web browser during a computer simulation.

* Correspondence: usuishiro@riken.jp

³Neuroinformatics Japan Center, RIKEN Brain Science Institute, Wako, Saitama, 351-0198, Japan

Full list of author information is available at the end of the article

machine through a web browser and carries out the simulation interactively (a screenshot is shown in Fig. 1). There is no need to install any software. It only requires a web browser. Therefore, Simulation Platform provides an ubiquitous computing environment for computational neuroscience research so as to free neuroscientists from tedious computer administration tasks and allow them to solely concentrate on their science. A demo site is open at <http://sf4.sim.neuroinf.jp/~tyam/cns11/>.

Author details

¹RIKEN BSI-TOYOTA Collaboration Center, RIKEN Brain Science Institute, Wako, Saitama, 351-0198, Japan. ²School of Human Science and Environment, University of Hyogo, Himeji, Hyogo, 670-0092, Japan. ³Neuroinformatics Japan Center, RIKEN Brain Science Institute, Wako, Saitama, 351-0198, Japan. ⁴Graduate School of Information Systems, University of Electro-Communications, Chofu, Tokyo, 182-8585, Japan. ⁵School of Information Science and Technology, Aichi Prefectural University, Nagakute, Aichi, 480-1198, Japan. ⁶Faculty of Engineering, Chubu University, Kasugai, Aichi, 486-8501, Japan. ⁷Laboratory for Neuroinformatics (Computational Science Research Program), RIKEN Brain Science Institute, Wako, Saitama, 351-0198, Japan. ⁸School of Information Science and Technology, Chukyo University, Toyota, Aichi 470-0393, Japan. ⁹Laboratory for Neuroinformatics, RIKEN Brain Science Institute, Wako, Saitama 351-0198, Japan.

Published: 18 July 2011

doi:10.1186/1471-2202-12-S1-P346

Cite this article as: Yamazaki *et al.*: Simulation platform: cloud-computing meets computational neuroscience. *BMC Neuroscience* 2011 12(Suppl 1):P346.

Submit your next manuscript to BioMed Central and take full advantage of:

- Convenient online submission
- Thorough peer review
- No space constraints or color figure charges
- Immediate publication on acceptance
- Inclusion in PubMed, CAS, Scopus and Google Scholar
- Research which is freely available for redistribution

Submit your manuscript at
www.biomedcentral.com/submit

