

RESEARCH ARTICLE

Open Access

# Identification of $\alpha$ -Chimaerin as a Candidate Gene for Critical Period Neuronal Plasticity in Cat and Mouse Visual Cortex

Cui Bo Yang<sup>1</sup>, Yu Ting Zheng<sup>2</sup>, Paul J Kiser<sup>3</sup> and George D Mower<sup>1\*</sup>

## Abstract

**Background:** In cat visual cortex, critical period neuronal plasticity is minimal until approximately 3 postnatal weeks, peaks at 5 weeks, gradually declines to low levels at 20 weeks, and disappears by 1 year of age. Dark rearing slows the entire time course of this critical period, such that at 5 weeks of age, normal cats are more plastic than dark reared cats, whereas at 20 weeks, dark reared cats are more plastic. Thus, a stringent criterion for identifying genes that are important for plasticity in visual cortex is that they show differences in expression between normal and dark reared that are of opposite direction in young versus older animals.

**Results:** The present study reports the identification by differential display PCR of a novel gene,  $\alpha$ -chimaerin, as a candidate visual cortex critical period plasticity gene that showed bidirectional regulation of expression due to age and dark rearing. Northern blotting confirmed the bidirectional expression and 5'RACE sequencing identified the gene. There are two alternatively-spliced  $\alpha$ -chimaerin isoforms:  $\alpha$ 1 and  $\alpha$ 2. Western blotting extended the evidence for bidirectional regulation of visual cortex  $\alpha$ -chimaerin isoform expression to protein in cats and mice.  $\alpha$ 1- and  $\alpha$ 2-Chimaerin were elevated in dark reared compared to normal visual cortex at the peak of the normal critical period and in normal compared to dark reared visual cortex at the nadir of the normal critical period. Analysis of variance showed a significant interaction in both cats and mice for both  $\alpha$ -chimaerin isoforms, indicating that the effect of dark rearing depended on age. This differential expression was not found in frontal cortex.

**Conclusions:** Chimaerins are RhoGTPase-activating proteins that are EphA4 effectors and have been implicated in a number of processes including growth cone collapse, axon guidance, dendritic spine development and the formation of corticospinal motor circuits. The present results identify  $\alpha$ -chimaerin as a candidate molecule for a role in the postnatal critical period of visual cortical plasticity.

**Keywords:** Chimerin,  $\alpha$ 1-Chimaerin,  $\alpha$ 2-Chimaerin, Dark Rearing, differential display PCR

## Background

The postnatal development of visual cortex is guided by visual experience during early postnatal life. The clearest example of such environmental effects on visual cortical development is monocular deprivation, a condition that leads to dramatic anatomical and physiological abnormalities [1]. In normal development, sensitivity to monocular deprivation is limited to a "critical period," which

in cats, begins several weeks after birth, peaks at about 5-6 weeks, gradually declines to low levels at 5 months and disappears at about 1 year of age [1]. Mice show a similar critical period for monocular deprivation but with a shorter time course [2].

Rearing in total darkness from birth maintains many properties of the neonatal visual cortex in cats [3-5] and mice [2,6]. Thus, visual cortical neurons of dark reared animals show reduced responsiveness, enhanced response habituation and reduced selectivity for the orientation and direction of movement of a visual stimulus compared to age matched normally reared

\* Correspondence: george.mower@louisville.edu

<sup>1</sup>Department of Anatomical Sciences and Neurobiology, University of Louisville School of Medicine, 500 S. Preston St., Louisville, KY 40202, USA  
Full list of author information is available at the end of the article

animals. When subsequently exposed to the visual environment, normal neuronal response properties emerge and more importantly, dark rearing also extends the critical period for effects of monocular deprivation far beyond its normal age limit in both cats [3,4] and mice [6]. Electrophysiological results indicate that the effect of dark rearing is to slow the time course of the entire critical period. At young ages (5 weeks) normal animals are more plastic than dark reared, while at later ages (20 weeks) dark reared animals are more plastic [7,8]. Thus, a stringent criterion for identifying genes that control plasticity in visual cortex is that they show opposite direction differences in their levels of expression between normal and dark rearing in young versus older animals.

We have completed a differential display PCR (ddPCR) screen of visual cortex of normal and dark reared cats at 5 and 20 weeks to identify such candidate plasticity genes. Northern and western blots were used to verify opposite direction effects of dark rearing in young versus older cats and mice. We have repeatedly found two patterns of differential expression in cat and mouse visual cortex. One pattern (eg. *Dab-1*) [9] is an elevation in normal animals at the peak of the critical period (cats: 5 weeks; mice: 3.5 weeks) and an elevation in dark reared animals at the nadir of the normal critical period (cats: 20 weeks; mice: 9.5 weeks). This pattern could represent genes that activate plasticity mechanisms. The other pattern is the opposite: elevation in dark reared animals at the peak of the normal critical period and elevation in normal animals at its nadir

(eg. *Munc13-3*) [10,11] and could represent plasticity repressor genes.

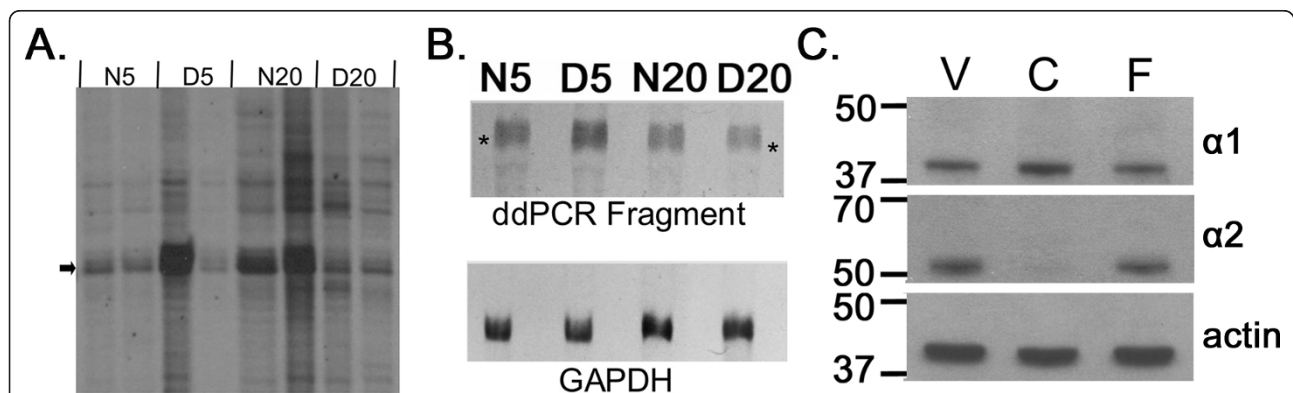
Here we report the identification of another novel gene,  $\alpha$ -chimaerin, as a candidate visual cortex critical period plasticity gene. There are two alternatively-spliced  $\alpha$ -chimaerin transcript variants,  $\alpha 1$  and  $\alpha 2$ . Both isoforms are expressed in postnatal and adult brain but only  $\alpha 2$  in embryonic brain [12]. Chimaerins have been implicated in axonal guidance and NMDA dependent dendritic spine regulation [13-18]. Both isoforms showed elevated expression in dark reared animals at the peak of the normal critical period and elevation in normal animals at the nadir of the critical period.

## Results

### Identification of $\alpha$ -Chimaerin as a Candidate Plasticity Gene in Cat Visual Cortex

Figure 1A shows ddPCR results from a primer pair that revealed a band that showed elevated expression in dark reared cat visual cortex at 5 weeks and in normal cat visual cortex at 20 weeks. There was likely a loading error on the right D5 sample. The band was excised and cloned to generate probes for northern blotting and for cloning and sequencing. Northern blotting with the ddPCR fragment confirmed bidirectional regulation due to age and dark rearing (Figure 1B) and densitometric analysis, corrected against GAPDH, indicated a 1.9 fold increase in expression in D5 compared to N5 and a 1.7 fold increase in N20 compared to D20 visual cortex.

Sequencing was done to establish the identity of the bidirectionally regulated gene. The 153 bp ddPCR



**Figure 1 Differential expression of  $\alpha$ -chimaerin: Identification by ddPCR, confirmation by northern blot and validation of antibodies.** A. Portion of a ddPCR sequencing gel showing a ddPCR product (arrow) which is expressed more highly in dark reared (D5) than normal (N5) cat visual cortex at 5 weeks and more highly in normal (N20) than dark reared (D20) cat visual cortex at 20 weeks. Independently isolated RNA samples from two cats at each rearing/age condition were run together (8 lanes) to help eliminate false positives. B. Top. Northern blot confirming differential expression of the ddPCR fragment. Total cat visual cortical RNA from each of the four rearing/age conditions was loaded and probed with the cloned ddPCR fragment. Asterisks indicate 28s rRNA. Bottom. The same filter is shown after stripping and reprobing with GAPDH. C. Western blots indicated that each antibody recognized a single band of appropriate molecular weight ( $\alpha 1$ : 38 kD,  $\alpha 2$ : 53 kD).  $\alpha 1$ -Chimaerin (Top) was expressed about equally in mouse visual (V), frontal (F) cortex and cerebellum (C).  $\alpha 2$ -Chimaerin (Middle) was expressed highly in neocortical structures but at very low levels in cerebellum. Filter was stripped and reprobed with an antibody to actin (Bottom) as a control for loading errors.

fragment showed 91% identity with the 3' end of human  $\alpha$ -chimaerin. 5' RACE was done to extend the sequence to 2379 bases of the cat gene (GenBank: EU661869.2) which included the complete coding region. Blast search of the coding region indicated 98% identity to the human chimaerin gene on chromosome 2.

### Bidirectional Regulation of $\alpha$ -Chimaerin Protein in Cat and Mouse Visual Cortex

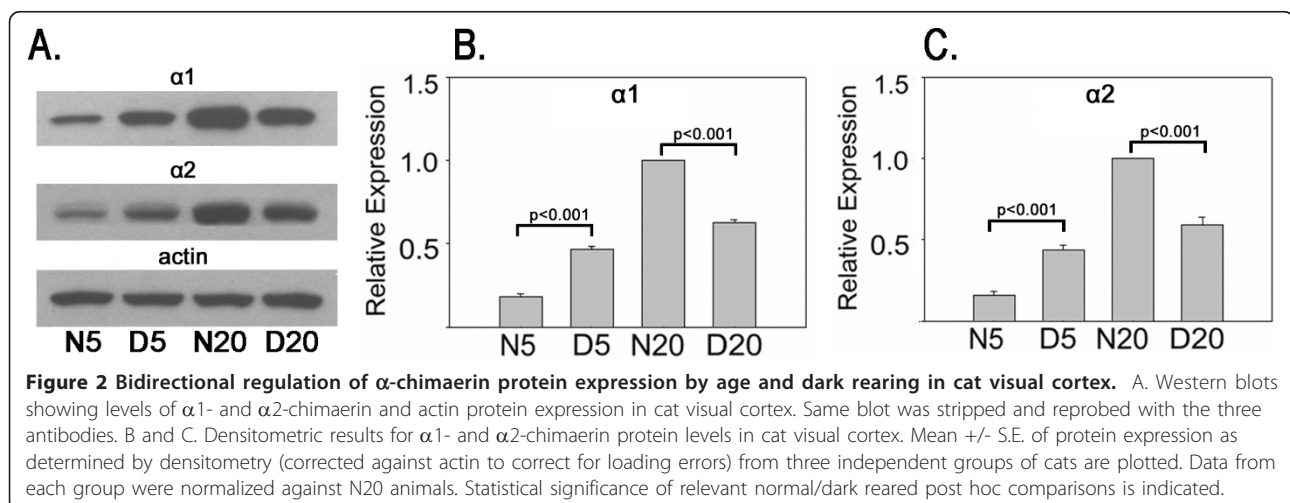
To extend the mRNA results to protein, western blots in cat and mouse visual cortex were done. As shown in figure 1C, the antibodies developed as described in Materials and Methods to the two isoforms of  $\alpha$ -chimaerin ( $\alpha$ 1 and  $\alpha$ 2) each labeled a single band of appropriate size ( $\alpha$ 1: 38 kD,  $\alpha$ 2: 53 kD).  $\alpha$ 1-Chimaerin was expressed in visual cortex, frontal cortex and cerebellum.  $\alpha$ 2-Chimaerin was expressed in the two neocortical structures but not detected in cerebellum. These regional differences in expression between the two protein isoforms match the regional differences in their mRNA expression [12] further confirming the specificity of the antibodies.

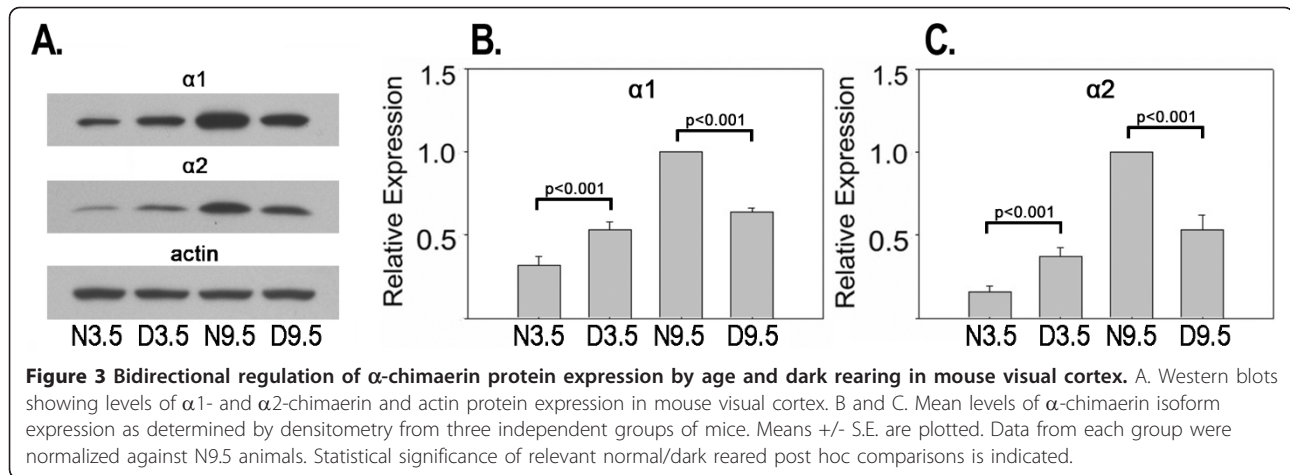
Figure 2 presents western blot and densitometric analysis of  $\alpha$ 1- and  $\alpha$ 2-chimaerin proteins in the visual cortex of cats at the peak (5 weeks) and the nadir (20 weeks) of the critical period. For both isoforms, analysis of variance showed a significant interaction in cats (F [1,8],  $p < .001$ ), indicating that the effect of dark rearing depended on age. Both  $\alpha$ -chimaerin proteins were significantly elevated (Tukey tests,  $p < .001$ ) in dark reared compared to normal visual cortex at 5 weeks ( $\alpha$ 1: 2.6 fold;  $\alpha$ 2: 2.8 fold) and in normal compared to dark reared visual cortex at 20 weeks ( $\alpha$ 1: 1.6 fold;  $\alpha$ 2: 1.7 fold). In normal development,  $\alpha$ 1-chimaerin increased 5.6 fold from 5 to 20 weeks of age and  $\alpha$ 2-chimaerin increased 6.3 fold.

Figure 3 presents western blot and densitometric analysis from mouse visual cortex at the peak (3.5 weeks) and nadir (9.5 weeks) of the critical period. As in cats, for both proteins, analysis of variance showed a significant interaction in mice (F [1,8],  $p < .001$ ), indicating that the effect of dark rearing depended on age. Both  $\alpha$ -chimaerin isoforms were significantly elevated (Tukey tests,  $p < .001$ ) in dark reared compared to normal visual cortex at 3.5 weeks ( $\alpha$ 1: 1.7 fold;  $\alpha$ 2: 2.3 fold) and in normal compared to dark reared visual cortex at 9.5 weeks ( $\alpha$ 1: 1.6 fold;  $\alpha$ 2: 1.9 fold). In normal development,  $\alpha$ 1-chimaerin increased 3.1 fold from 3.5 to 9.5 weeks of age and  $\alpha$ 2-chimaerin increased 6.1 fold. To provide a more complete description of visual cortical chimaerin expression across normal postnatal development, additional ages were analyzed in mice (figure 4). For both isoforms, expression was very low at one week of age, increased sharply from the time of eye opening (2 weeks) until the end of the critical period (9.5 weeks), and was stable thereafter until adulthood (18 weeks).

### Bidirectional Regulation of $\alpha$ -Chimaerin Protein Expression is not found in Frontal Cortex

An important issue is whether the bidirectional regulation of  $\alpha$ -chimaerin is specific to visual cortex and not a generalized phenomenon throughout the brain. If  $\alpha$ -chimaerin is important for visual cortical plasticity, bidirectional regulation of its expression by age and dark rearing should be specific to or elevated in visual cortex. To answer this, we determined the effects of age and dark rearing on protein expression of both isoforms in mouse frontal cortex, as shown in figure 5. Levels of  $\alpha$ -chimaerin isoform expression were similar in all rearing/age conditions. Densitometric analysis on three independent groups of mice indicated no statistically significant effects for either isoform in frontal cortex.





Bidirectional regulation of  $\alpha$ -chimaerin expression due to age and dark rearing was not a generalized effect throughout neocortex.

## Discussion

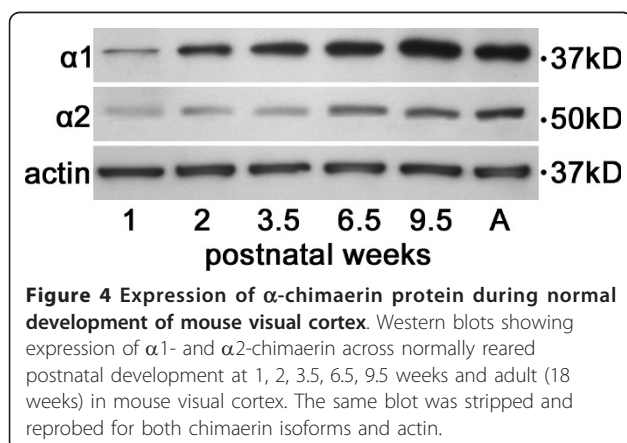
### Current Findings

The present ddPCR gene screening identified a novel candidate gene,  $\alpha$ -chimaerin, as a candidate for a role in critical period neuroplasticity of the cat visual cortex. Western blot analysis confirmed that both  $\alpha 1$ - and  $\alpha 2$ -chimaerin proteins showed similar bidirectional regulation due to age and dark rearing in cat and mouse visual cortex and that this effect did not occur in frontal cortex. These combined results implicate both  $\alpha$ -chimaerin isoforms as candidate molecules for neuronal plasticity during the visual cortical critical period. The pattern of bidirectional regulation shown by  $\alpha$ -chimaerins was opposite to that shown by physiological plasticity [7,8]. Like Munc13-3 [10,11],  $\alpha$ -chimaerin showed elevation in dark reared compared to normal animals at the peak of the normal critical period and elevation in normal compare to dark reared at the nadir. Genes that show

this pattern could represent repressors of visual cortical plasticity. The present results provide the scientific basis for functional analyses of the effects of chimaerin gene mutation on visual cortical plasticity.

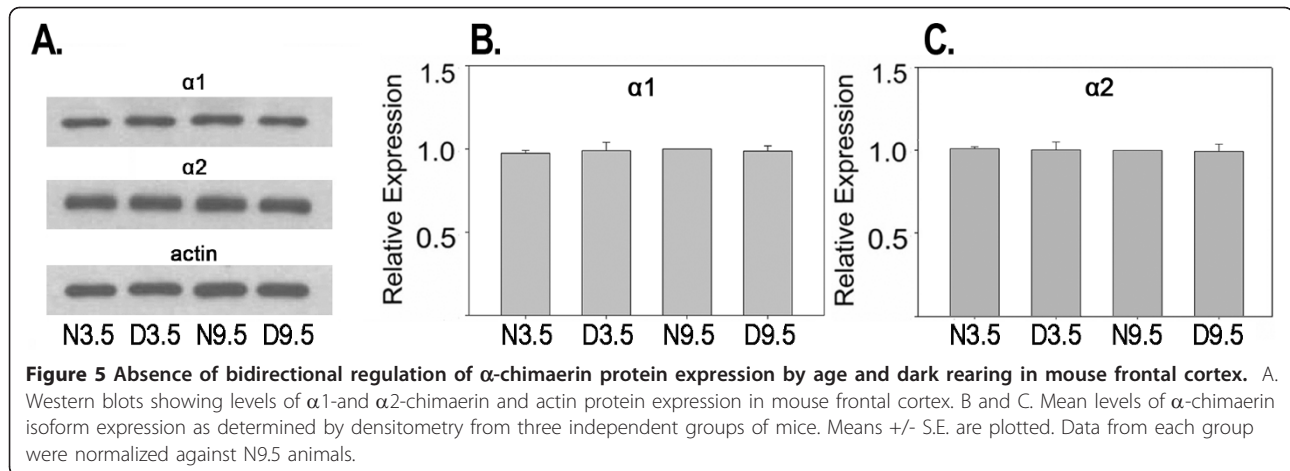
### Relation to previous gene screening studies

A growing number of gene screening studies have investigated postnatal age changes in gene expression or have manipulated neuronal activity levels to identify candidate neuronal plasticity genes. These approaches have yielded important information on a number of genes [19-28] that are responsive to visual input, developmentally regulated during the critical period, and/or involved in structural and functional plastic responses [see [29,30] for reviews]. All of these approaches confound changes in neuronal activity and changes in neuronal plasticity. The present bidirectional screen, based on the effects of age and dark rearing on physiologically assessed visual cortical plasticity, provides a promising alternative approach that more directly focuses on neuronal plasticity. Bidirectional regulation of gene expression is difficult to explain in terms of neuronal activity level. Dark rearing reduces the responsiveness of visual cortical neurons in both young and older cats [4,5]. Spontaneous activity is lower in young dark-reared animals and comparable in older dark-reared animals [5,31]. Therefore, the overall level of activity (spontaneous activity plus visual responses) in light-reared animals is higher than in dark-reared animals at all ages. If the expression of a gene reflected only neuronal activity level, it would be expected that dark rearing would have the same effect in both young and old animals and not show bidirectional regulation.



### $\alpha$ -Chimaerin in Neuronal Development and Plasticity

The two isoforms of  $\alpha$ -chimaerin,  $\alpha 1$  and  $\alpha 2$ , are alternatively spliced products of a single gene. Both isoforms



are expressed in postnatal and adult brain; only  $\alpha 2$  in embryonic brain [12]. Chimaerins are RhoGTPase-activating proteins (RhoGAPs) which activate or inactivate signaling pathways depending upon whether they are bound to GTP or GDP. The functions of chimaerins in the nervous system are just beginning to be understood [13-18]. Recently convergent evidence from three laboratories [14-16] implicated  $\alpha 2$ -chimaerin as an essential mediator of ephrinB3/EphA4-dependent motor circuit formation. Mutations of ephrinB3, EphA4 or  $\alpha 2$ -chimaerin produce a characteristic hopping rabbit like gait. This gait is due to a failure of  $\alpha 2$ -chimaerin mediated ephrin3 axonal guidance cues, resulting in bilateral corticospinal projections.

$\alpha 2$ -Chimaerin has also been implicated in semaphorin induced growth cone collapse [13]. The interaction of chimaerins with semaphorin raises another possible mechanism by which age/dark rearing and their regulation of  $\alpha 2$ -chimaerin could regulate neuronal plasticity. Semaphorins are also critical factors in angiogenesis [32]. In addition to its well documented effects on visual cortical neuronal function, dark rearing also affects astrocytes [33] and vasculature [34]. Thus, the entire neuronal-glia-vasculature network could be involved in the contribution of chimaerin to neuronal plasticity. This concept is central to the brain/cognitive reserve hypothesis which has been proposed to explain neuronal plasticity induced by pathology or trauma [35,36].

$\alpha 1$ -Chimaerin has been implicated in regulation of in dendrites and spines. Increased expression of  $\alpha 1$ -chimaerin expression results in pruning and suppression of  $\alpha 1$ -chimaerin in expansion of dendritic spines and branches [17,18].  $\alpha 1$ -Chimaerin is present in dendrites and spines, where it binds to the NMDA receptor NR2A subunit and the ability of  $\alpha 1$ -chimaerin to modulate dendritic spines is dependent upon an interaction with the NMDA receptor [18].  $\alpha$ -Chimaerins are

promising newly identified players in axonal development and synaptic plasticity. The present results extend this evidence by implicating  $\alpha$ -chimaerins as candidate molecules for a role in postnatal critical period plasticity of visual cortex.

## Conclusions

The present results identify  $\alpha$ -chimaerin as a candidate molecule for a role in the postnatal critical period of visual cortical plasticity. Electrophysiological results had shown that dark rearing slows the entire time course of this critical period, such that at 5 weeks of age, normal cats are more plastic than dark reared cats, whereas at 20 weeks, dark reared cats are more plastic. ddPCR, northern blotting and sequencing identified a novel gene,  $\alpha 1$ -chimaerin, as a candidate visual cortex critical period plasticity gene that showed such bidirectional regulation of expression due to age and dark rearing. Western blotting extended the evidence for bidirectional regulation of expression of both visual cortical  $\alpha$ -chimaerin isoforms to protein in cats and mice.  $\alpha 1$ - and  $\alpha 2$ -Chimaerin were elevated in dark reared compared to normal visual cortex at the peak of the normal critical period and in normal compared to dark reared visual cortex at the nadir of the normal critical period. Genes that show this pattern could represent repressors of visual cortical plasticity. The present results provide the scientific basis for functional analyses of the effects of chimaerin gene mutation on visual cortical plasticity.

## Methods

### Animals

Cats were used for differential display PCR, cloning, sequencing, northern and western blotting. Cats were reared in a normal 12 hour light/dark (N) cycle or in complete darkness from birth to 5 or 20 weeks of age (D). For each of these four rearing/age conditions (N5,

D5, N20, D20), three animals were used (12 cats in total). Fresh brain regions (visual cortex [all of Area 17 and possibly a small part of 18], frontal cortex [the anterior quarter of the cerebral hemisphere], and cerebellum [entire structure]) were dissected, immediately frozen in liquid nitrogen, and stored at  $-80^{\circ}\text{C}$  until used for extraction of total RNA and protein.

Mice were used for western blot analysis of  $\alpha$ -chimaerin isoform expression. They were reared in a normal 12 hour light/dark cycle or in complete darkness from birth to 3.5 or 9.5 weeks of age. The ages were based on published studies of the time course of the critical period in mouse visual cortex [37-39]. Three independent samples of mice including all four ages and rearing conditions (N3.5, D3.5, N9.5, D9.5) were collected. Within each sample three animals were pooled for each rearing/age condition (36 mice in total) to provide sufficient tissue and reduce individual variability. To provide a complete description of normal postnatal development of chimaerin expression in visual cortex, additional mice were reared in a normally lit environment until 1, 2, 6.5 weeks, and adult (18 weeks). Three animals were pooled for each age sample as above (total 12 additional mice). Visual cortex (monocular and binocular regions), frontal cortex and in several normal 9.5 week mice cerebellum were dissected, immediately frozen in liquid nitrogen, and stored at  $-80^{\circ}\text{C}$  until used for western blots. Cats and mice were killed by an overdose of sodium pentobarbital prior to tissue dissection (75 mg/kg, intraperitoneal injection). All procedures in cats and mice conformed to the guidelines of the National Institutes of Health and were approved by the Institutional Animal Care and Use Committee.

#### Differential Display PCR (ddPCR)

RNA was extracted from cat visual cortical samples and its amount and integrity determined as described previously [40]. DNA contamination was removed from the RNA (MessageClean, GenHunter Corp., Nashville, TN) and cDNA was synthesized (SMART, Clontech, Palo Alto, CA or RNAimage, GenHunter Corp.). PCR on cDNA from each RNA sample was done using the appropriate oligo-dT-X (oligo-dT-C; dT-G; dT-A) primer and 80 arbitrary primers as provided in a commercially available kit (RNAimage, GenHunter Corp.). The ddPCR products showing bidirectional expression due to age and dark rearing were amplified in a PCR reaction using the same primers as in the initial reaction, then cloned (PCR-TRAP, GenHunter) for use in sequencing and as probes for northern blots. The resultant sequences were run against gene and expressed sequence tag databases to determine similarity to known genes. 5'RACE PCR and cloning (SMART, Clontech) were used to generate additional sequence for the ddPCR fragment.

#### Northern Blot Analysis

The cat ddPCR fragment (153 bp) obtained from the screen was used as the probe for northern blotting. Total RNA was extracted from the tissue samples as described above. Filters with lanes from all experimental conditions were hybridized (stringency: 0.1x sodium chloride-sodium citrate buffer, 0.1x sodium dodecyl sulphate (SDS),  $42^{\circ}\text{C}$ ) using these probes according to our standard procedures [40]. The filters were stripped and re-hybridized with a probe to glyceraldehyde-3-phosphate dehydrogenase (GAPDH) to correct for loading errors (American Type Culture Collection, ATCC 57090). The relative intensity of signals in northern blots was determined by densitometric scanning, corrected against GAPDH.

#### Western Blot Analysis

Antibodies against  $\alpha$ 1- and  $\alpha$ 2-chimaerin were developed in collaboration with Quality Controlled Biochemicals (Hopkinton, MA.) The antibody to the  $\alpha$ 1 isoform was developed against amino acids 9-29 and the antibody to  $\alpha$ 2 against amino acids 151-173. Both antibodies were affinity purified. Homogenates of visual and frontal cortex were prepared in the presence of a standard protease inhibitor cocktail (Sigma-Aldrich Co., St. Louis, MO). Centrifugation was done to yield a crude synaptosomal fraction and equal amounts of protein were added to each well of a 4-15% polyacrylamide SDS gel (Bio-Rad Laboratories, Inc., Hercules, CA), separated by electrophoresis, and then electrophoretically transferred to a polyvinylidene fluoride membrane using a Transblot cell (Bio-Rad Laboratories, Inc., Hercules, CA). Nonspecific binding sites were blocked with 5% non-fat milk and blots were then incubated with the primary antibody (rabbit polyclonal, diluted 1:1000). Blots were extensively washed and incubated with appropriate horseradish peroxidase conjugated secondary antibodies at room temperature for 2 hr. Specific protein bands were visualized by enhanced chemiluminescence (ECL) detection reagents (Amersham Biosciences, Piscataway, NJ). The blots processed for ECL were then stripped and re-probed with the other chimaerin antibody, then stripped again and re-probed with a mouse monoclonal antibody to  $\beta$ -actin (Sigma-Aldrich Co., St. Louis, MO) to control for loading errors. The second and third immunostaining were carried out as described above.

Exposed films from western blots were quantified by computerized densitometric analysis. High resolution TIF images of each film were obtained with an AlphaImager EP, MultiImage I. Protein expression levels for each individual antibody were calculated as an average pixel density by AlphaView software (version 2.0.0.9) from AlphaInnotech. All densitometric measures for  $\alpha$ -chimaerin protein were corrected against  $\beta$ -actin.

Statistical analysis included two way ANOVA and Tukey post hoc comparisons.

#### Acknowledgements

This work was supported by NIH R01 EY016724.

#### Author details

<sup>1</sup>Department of Anatomical Sciences and Neurobiology, University of Louisville School of Medicine, 500 S. Preston St., Louisville, KY 40202, USA. <sup>2</sup>Department of Medicine, University of Louisville School of Medicine, 500 S. Preston St., Louisville, KY 40202, USA. <sup>3</sup>Department of Biology, Bellarmine University, 2001 Newburg Rd., Louisville, KY 40205, USA.

#### Authors' contributions

CBY performed ddPCR, cloning, sequencing, antibody development, northern and western blotting, and assisted in data analysis and manuscript preparation. YTZ performed bioinformatic analyses and participated in sequencing and antibody development. PJK carried out animal rearing, tissue dissection, data analysis and assisted in drafting the manuscript. GDM conceived of the study, directed its design and execution, conducted data analysis and drafted the manuscript. All authors read and approved the final manuscript.

#### Competing interests

The authors declare that they have no competing interests.

Received: 24 February 2011 Accepted: 18 July 2011

Published: 18 July 2011

#### References

1. Daw NW: *Visual Development*. 2 edition. New York, NY: Springer Science +Business Media, Inc; 2006.
2. Fagioliini M, Pizzorusso T, Berardi N, Domenici L, Maffei L: **Functional postnatal development of the rat primary visual cortex and the role of visual experience: dark rearing and monocular deprivation.** *Vision Res* 1994, **34**:709-720.
3. Cynader M, Mitchell DE: **Prolonged sensitivity to monocular deprivation in dark-reared cats.** *J Neurophysiol* 1980, **43**:1026-1040.
4. Mower GD, Berry D, Burchfiel JL, Duffy FH: **Comparison of the effects of dark rearing and binocular suture on development and plasticity of cat visual cortex.** *Brain Res* 1981, **220**:255-267.
5. Imbert M, Buisseret P: **Receptive field characteristics and plastic properties of visual cortical cells in kittens reared with or without visual experience.** *Exp Brain Res* 1975, **22**:25-36.
6. Fagioliini M, Katagiri H, Miyamoto H, Mori H, Grant SG, Mishina M, Hensch TK: **Separable features of visual cortical plasticity revealed by N-methyl-D-aspartate receptor 2A signaling.** *Proc Natl Acad Sci USA* 2003, **100**:2854-2859.
7. Beaver CJ, Ji Q, Daw NW: **Layer differences in the effect of monocular vision in light- and dark-reared kittens.** *Vis Neurosci* 2001, **18**:811-820.
8. Mower GD: **The effect of dark rearing on the time course of the critical period in cat visual cortex.** *Brain Res Dev Brain Res* 1991, **58**:151-158.
9. Yang CB, Zheng YT, Kiser PJ, Mower GD: **Identification of disabled-1 as a candidate gene for critical period neuroplasticity in cat and mouse visual cortex.** *Eur J Neurosci* 2006, **23**:2804-2808.
10. Yang CB, Zheng YT, Li GY, Mower GD: **Identification of Munc13-3 as a candidate gene for critical-period neuroplasticity in visual cortex.** *J Neurosci* 2002, **22**:8614-8618.
11. Yang CB, Kiser PJ, Zheng YT, Varoquaux F, Mower GD: **Bidirectional regulation of Munc13-3 protein expression by age and dark rearing during the critical period in mouse visual cortex.** *Neuroscience* 2007, **150**:603-608.
12. Hall C, Sin WC, Teo M, Michael GJ, Smith P, Dong JM, Lim HH, Manser E, Spurr NK, Jones TA, et al: **Alpha 2-chimerin, an SH2-containing GTPase-activating protein for the ras-related protein p21rac derived by alternate splicing of the human n-chimerin gene, is selectively expressed in brain regions and testes.** *Mol Cell Biol* 1993, **13**:4986-4998.
13. Brown M, Jacobs T, Eickholt B, Ferrari G, Teo M, Monfries C, Qi RZ, Leung T, Lim L, Hall C: **Alpha2-chimaerin, cyclin-dependent Kinase 5/p35, and its target collapsin response mediator protein-2 are essential components in semaphorin 3A-induced growth-cone collapse.** *J Neurosci* 2004, **24**:8994-9004.
14. Beg AA, Sommer JE, Martin JH, Scheiffele P: **alpha2-Chimaerin is an essential EphA4 effector in the assembly of neuronal locomotor circuits.** *Neuron* 2007, **55**:768-778.
15. Shi L, Fu WY, Hung KW, Porchetta C, Hall C, Fu AK, Ip NY: **Alpha2-chimaerin interacts with EphA4 and regulates EphA4-dependent growth cone collapse.** *Proc Natl Acad Sci USA* 2007, **104**:16347-16352.
16. Wegmeyer H, Egea J, Rabe N, Gezelius H, Filosa A, Enjin A, Varoquaux F, Deininger K, Schnutgen F, Brose N, et al: **EphA4-dependent axon guidance is mediated by the RacGAP alpha2-chimaerin.** *Neuron* 2007, **55**:756-767.
17. Buttery P, Beg AA, Chih B, Broder A, Mason CA, Scheiffele P: **The diacylglycerol-binding protein alpha1-chimaerin regulates dendritic morphology.** *Proc Natl Acad Sci USA* 2006, **103**:1924-1929.
18. Van de Ven TJ, VanDongen HM, VanDongen AM: **The nonkinase phorbol ester receptor alpha 1-chimerin binds the NMDA receptor NR2A subunit and regulates dendritic spine density.** *J Neurosci* 2005, **25**:9488-9496.
19. Corriveau RA, Huh GS, Shatz CJ: **Regulation of class I MHC gene expression in the developing and mature CNS by neural activity.** *Neuron* 1998, **21**:505-520.
20. Corriveau RA, Shatz CJ, Nedivi E: **Dynamic regulation of cpg15 during activity-dependent synaptic development in the mammalian visual system.** *J Neurosci* 1999, **19**:7999-8008.
21. Huh GS, Boulanger LM, Du H, Riquelme PA, Brotz TM, Shatz CJ: **Functional requirement for class I MHC in CNS development and plasticity.** *Science* 2000, **290**:2155-2159.
22. Lanahan A, Worley P: **Immediate-early genes and synaptic function.** *Neurobiol Learn Mem* 1998, **70**:37-43.
23. Morishita H, Miwa JM, Heintz N, Hensch TK: **Lynx1, a cholinergic brake, limits plasticity in adult visual cortex.** *Science* 2010, **330**:1238-1240.
24. Nedivi E, Hevroni D, Naot D, Israeli D, Citri Y: **Numerous candidate plasticity-related genes revealed by differential cDNA cloning.** *Nature* 1993, **363**:718-722.
25. Nedivi E, Fieldust S, Theill LE, Hevron D: **A set of genes expressed in response to light in the adult cerebral cortex and regulated during development.** *Proc Natl Acad Sci USA* 1996, **93**:2048-2053.
26. Nedivi E, Wu GY, Cline HT: **Promotion of dendritic growth by CPG15, an activity-induced signaling molecule.** *Science* 1998, **281**:1863-1866.
27. Qian Z, Gilbert ME, Colicos MA, Kandel ER, Kuhl D: **Tissue-plasminogen activator is induced as an immediate-early gene during seizure, kindling and long-term potentiation.** *Nature* 1993, **361**:453-457.
28. Yamagata K, Andreasson KI, Kaufmann WE, Barnes CA, Worley PF: **Expression of a mitogen-inducible cyclooxygenase in brain neurons: regulation by synaptic activity and glucocorticoids.** *Neuron* 1993, **11**:371-386.
29. Cohen S, Greenberg ME: **Communication between the synapse and the nucleus in neuronal development, plasticity, and disease.** *Annu Rev Cell Dev Biol* 2008, **24**:183-209.
30. Tropea D, Van Wart A, Sur M: **Molecular mechanisms of experience-dependent plasticity in visual cortex.** *Philos Trans R Soc Lond B Biol Sci* 2009, **364**:341-355.
31. Czepita D, Reid SN, Daw NW: **Effect of longer periods of dark rearing on NMDA receptors in cat visual cortex.** *J Neurophysiol* 1994, **72**:1220-1226.
32. Neufeld G, Kessler O: **The semaphorins: versatile regulators of tumour progression and tumour angiogenesis.** *Nat Rev Cancer* 2008, **8**:632-645.
33. Muller CM: **Dark-rearing retards the maturation of astrocytes in restricted layers of cat visual cortex.** *Glia* 1990, **3**:487-494.
34. Argandona EG, Lafuente JV: **Influence of visual experience deprivation on the postnatal development of the microvascular bed in layer IV of the rat visual cortex.** *Brain Res* 2000, **855**:137-142.
35. Stern Y: **Cognitive reserve and Alzheimer disease.** *Alzheimer Dis Assoc Disord* 2006, **20**:112-117.
36. Liberati G, Raffone A, Olivetti Belardinelli M: **Cognitive reserve and its implications for rehabilitation and Alzheimer's disease.** *Cogn Process* 2011.
37. Gordon JA, Stryker MP: **Experience-dependent plasticity of binocular responses in the primary visual cortex of the mouse.** *J Neurosci* 1996, **16**:3274-3286.
38. Guire ES, Lickey ME, Gordon B: **Critical period for the monocular deprivation effect in rats: assessment with sweep visually evoked potentials.** *J Neurophysiol* 1999, **81**:121-128.

39. Sawtell NB, Frenkel MY, Philpot BD, Nakazawa K, Tonegawa S, Bear MF: **NMDA receptor-dependent ocular dominance plasticity in adult visual cortex.** *Neuron* 2003, **38**:977-985.
40. Rosen KM, McCormack MA, Villa-Komaroff L, Mower GD: **Brief visual experience induces immediate early gene expression in the cat visual cortex.** *Proc Natl Acad Sci USA* 1992, **89**:5437-5441.

doi:10.1186/1471-2202-12-70

**Cite this article as:** Yang *et al.*: Identification of  $\alpha$ -Chimaerin as a Candidate Gene for Critical Period Neuronal Plasticity in Cat and Mouse Visual Cortex. *BMC Neuroscience* 2011 **12**:70.

**Submit your next manuscript to BioMed Central  
and take full advantage of:**

- Convenient online submission
- Thorough peer review
- No space constraints or color figure charges
- Immediate publication on acceptance
- Inclusion in PubMed, CAS, Scopus and Google Scholar
- Research which is freely available for redistribution

Submit your manuscript at  
[www.biomedcentral.com/submit](http://www.biomedcentral.com/submit)

