

RESEARCH ARTICLE

Open Access

CSF from Parkinson disease Patients Differentially Affects Cultured Microglia and Astrocytes

Mya C Schiess¹, Jennifer L Barnes¹, Timothy M Ellmore², Brian J Poindexter³, Kha Dinh³, Roger J Bick^{3*}

Abstract

Background: Excessive and abnormal accumulation of alpha-synuclein (α -synuclein) is a factor contributing to pathogenic cell death in Parkinson's disease. The purpose of this study, based on earlier observations of Parkinson's disease cerebrospinal fluid (PD-CSF) initiated cell death, was to determine the effects of CSF from PD patients on the functionally different microglia and astrocyte glial cell lines. Microglia cells from human glioblastoma and astrocytes from fetal brain tissue were cultured, grown to confluence, treated with fixed concentrations of PD-CSF, non-PD disease control CSF, or control no-CSF medium, then photographed and fluorescently probed for α -synuclein content by deconvolution fluorescence microscopy. Outcome measures included manually counted cell growth patterns from day 1-8; α -synuclein density and distribution by antibody tagged 3D model stacked deconvoluted fluorescent imaging.

Results: After PD-CSF treatment, microglia growth was reduced extensively, and a non-confluent pattern with morphological changes developed, that was not evident in disease control CSF and no-CSF treated cultures. Astrocyte growth rates were similarly reduced by exposure to PD-CSF, but morphological changes were not consistently noted. PD-CSF treated microglia showed a significant increase in α -synuclein content by day 4 compared to other treatments ($p \leq 0.02$). In microglia only, α -synuclein aggregated and redistributed to perinuclear locations.

Conclusions: Cultured microglia and astrocytes are differentially affected by PD-CSF exposure compared to non-PD-CSF controls. PD-CSF dramatically impacts microglia cell growth, morphology, and α -synuclein deposition compared to astrocytes, supporting the hypothesis of cell specific susceptibility to PD-CSF toxicity.

Background

Evidence of increased levels of specific cytokines and growth factors within nigrostriatal dopamine regions of the brain in Parkinson's disease (PD) patients, has led to the belief that PD is the result of immunological responses that promote an increased synthesis and release of proinflammatory cytokines [1-3]. These cytokines have been shown to affect the quantity and distribution of intracellular proteins such as α -synuclein in cultured microglia [4]. The exact function of α -synuclein is unknown. However, there is evidence supporting a vesicular, pre-synaptic role for α -synuclein in the dopamine transporter system [5-7]. This normally soluble protein is recognized to be a large component of the Lewy body, the pathologic hallmark of

the disease. What promotes the formation of Lewy body inclusions is poorly understood, but it has been proposed that this is a protective pathway in response to failed mechanisms, such as aggresome degradation of dysfunctional protein [8]. The Lewy body, and its precursor the Lewy neurite, have been reproducibly traced through the CNS, resulting in a progressive and predictable pattern of involvement leading to the staging of sporadic Parkinson's disease and the clinical correlation of symptoms with neuroanatomical localization [9].

The majority of investigations regarding the pathogenic mechanisms underlying cell death in PD have emphasized post-mortem studies, genetically altered animals and neuronal cultures, but a role for non-neuronal cells in the pathoetiology of PD by investigations into glial cell line responses, may lead to a better understanding of the role of α -synuclein in cell-cell communication and the neuron-glia relationship in PD.

* Correspondence: Roger.J.Bick@uth.tmc.edu

³Department of Pathology and Laboratory Medicine, University of Texas Medical School at Houston, Houston, Texas 77030, USA
Full list of author information is available at the end of the article

Our previous work with cultured microglia cells showed that after exposure to specific cytokines, α -synuclein was both redistributed and increased in content, with the cells becoming prone to enter cell death pathways [4]. We therefore treated cultured human microglia cells with PD-CSF to see if we could produce similar results. The cells responded dramatically, exhibiting reduced growth, a loss of adhesion, and eventual necrotic death. Given these findings with cultured microglia, we postulated that effects in other glial cell lines such as astrocytes might be similar to those in microglia. Astrocytes have not been investigated to as great a degree as other cell types, despite having critical signaling and support roles in the CNS. Astrocytes are known to be involved in protection against neurodegeneration, and display α -synuclein immunoreactivity in cases of sporadic PD [10-13]. Therefore, the purpose of this study was to continue a line of research exploring the effects of PD-CSF and disease control CSF on cultured glial cells, while comparing outcomes with microglia and astrocytes in terms of resiliency and protein aggregations and distributions. These two cell types differ in their functions in the CNS and in their origins, microglia being derived from bone marrow and functioning primarily as phagocytic neuroprotective first responders, whereas astrocytes are multi-task cells derived from neurectoderm, with functions ranging from metabolic buffers and detoxifiers, to providers of endothelial support and scar formation. We hypothesized that these two functionally diverse cell lines would both succumb to PD-CSF treatments, but different responses would occur in protein losses/changes and ability to overcome these challenges. Using not only PD-CSF, but also non-PD disease control CSF and no-CSF treatments, expands our limited knowledge of cellular responses in PD. Previous studies have shown the 'toxicity' of PD-CSF on adrenal medulla tumor cells and retardation of cell growth [14]. Since 1995, it has been known that PD-CSF contains factors which result in dopaminergic neuron distress and growth inhibition [15,16]. However, the role of non-neuronal cells in disease progression has been studied to a lesser degree, even though their roles in signaling and neuron support are well established.

Results and Discussion

Cultured microglia cells growth patterns

Microglia cells showed a reduced rate of growth following PD-CSF treatment, as well as diverse morphological changes that included cellular blebbing, but these observations were not apparent in disease control CSF treated or control (no-CSF) microglia cultures. Figure 1 demonstrates that by day four control cells had grown to confluence, whereas PD-CSF treated microglia were sparse and non-confluent. Disease control CSF treated cells had a

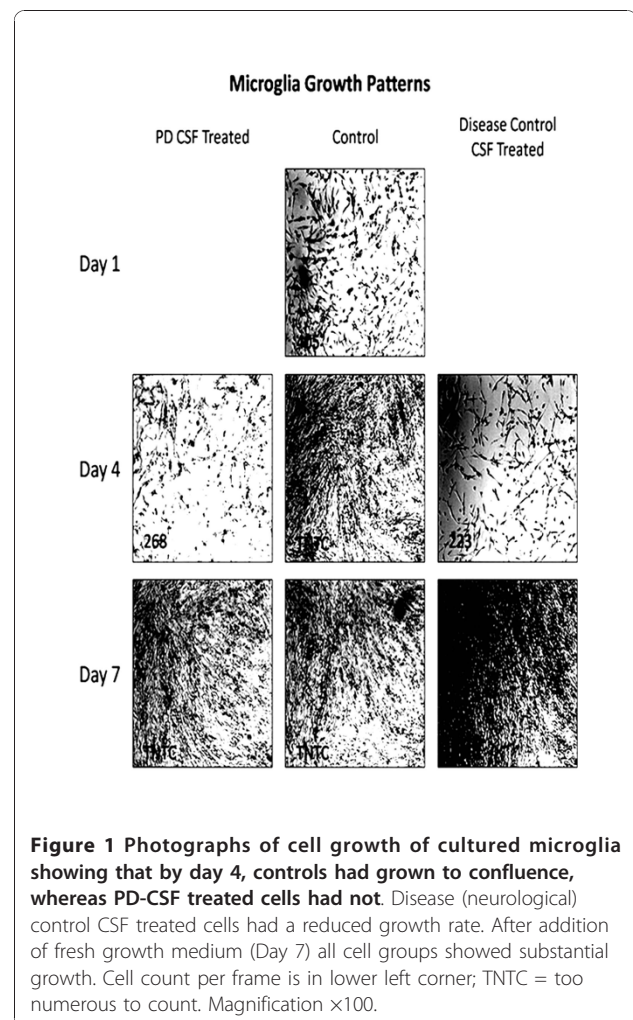


Figure 1 Photographs of cell growth of cultured microglia showing that by day 4, controls had grown to confluence, whereas PD-CSF treated cells had not. Disease (neurological) control CSF treated cells had a reduced growth rate. After addition of fresh growth medium (Day 7) all cell groups showed substantial growth. Cell count per frame is in lower left corner; TNTC = too numerous to count. Magnification $\times 100$.

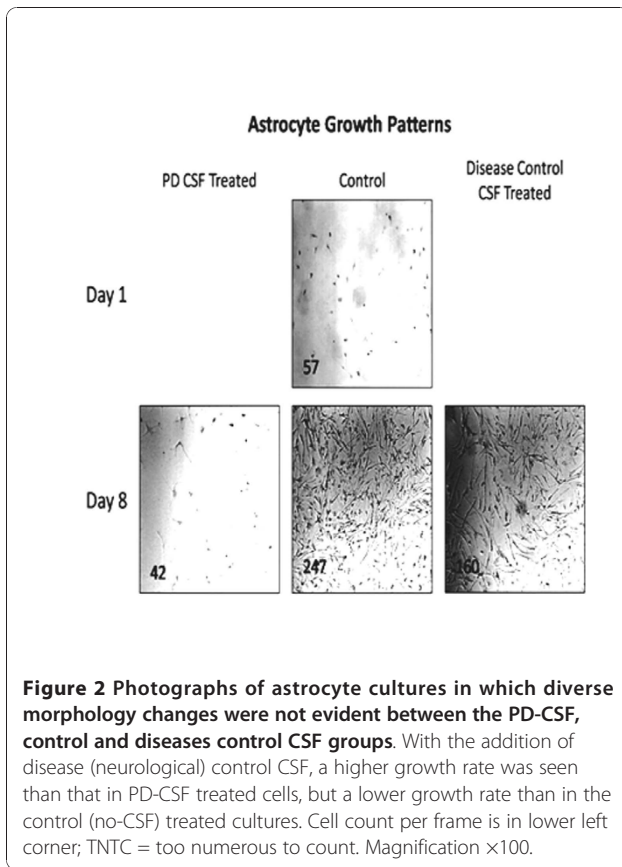
reduced growth rate, but overt changes in cell morphology were not apparent. By day seven, after the addition of fresh culture medium, all cell groups showed substantial renewed growth and viability (Magnification $\times 400$).

Cultured astrocytes cell growth patterns

Figure 2 illustrates variable and minimal changes in morphology of the astrocyte cultures. PD-CSF treated astrocytes displayed a slower growth rate than the microglia. However, when disease control CSF was added to astrocyte cultures, the growth rate was much higher than that in the PD-CSF treated cells, but slower than the no-CSF treated cultures. Cell growth for cultured astrocytes continued at a slower rate following exposure to PD-CSF even after addition of fresh medium, which did support some increased growth (Magnification $\times 400$).

α -synuclein distribution in microglia

As seen in Figure 3 the intracellular content of α -synuclein following PD-CSF treatment, compared to disease



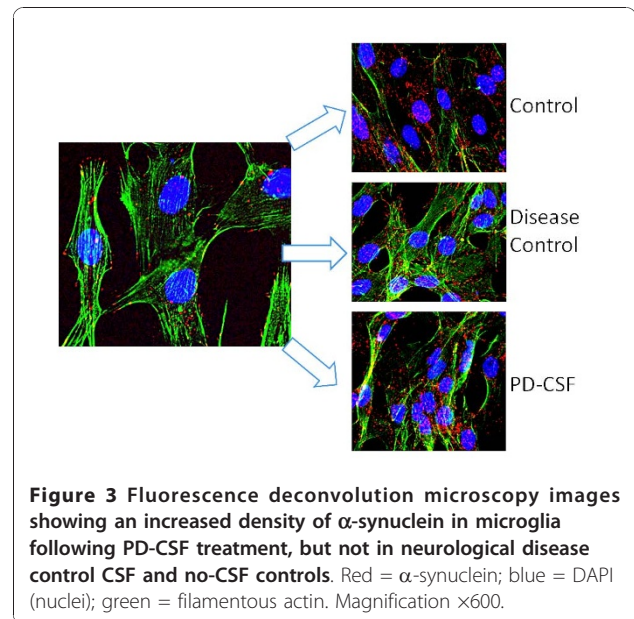
control CSF treated and no-CSF controls, was significantly increased ($p < 0.05$ for all comparisons; 1575 ± 1225 v 513 ± 235 v 618 ± 197 , PD v control disease v control; pixel densities, $n = 8$ experiments). However, what is of note is that α -synuclein protein increases were in a somewhat random, intracellular locale, not along the periphery of the cell and clustered to the nucleus (Magnification $\times 600$).

α -synuclein density in astrocytes

In contrast to microglia cultures, Figure 4 shows that the α -synuclein density in cultured astrocytes was variably affected, with no discernable increases in protein content following various CSF treatments (Control 333 ± 264 ; disease-control 480 ± 324 ; PD-CSF treated 511 ± 261 ; pixel densities, $n = 8$ experiments). Unlike the microglia cells, the α -synuclein seen at the cell extensions, was minimally disrupted (Magnification $\times 600$).

α -synuclein content in treated microglia cells

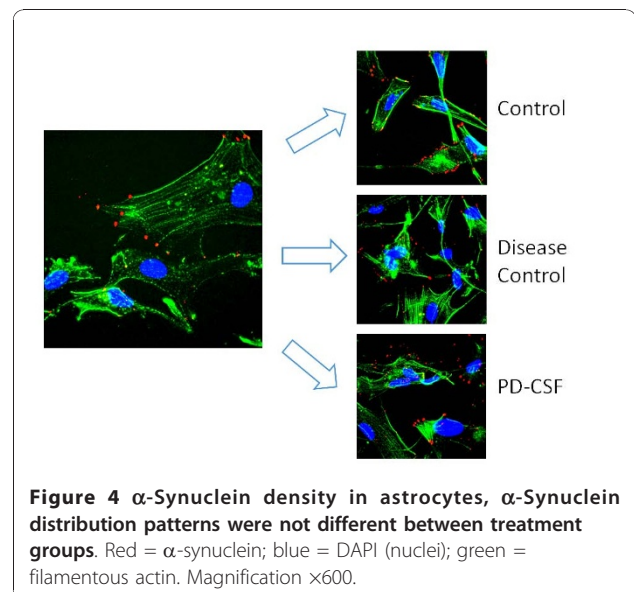
Relative densities of α -synuclein content in cultured microglia over time (consecutive days 1-4), between the three treatment groups are shown in Figure 5. PD-CSF treatment resulted in a rapid, significant increase in α -synuclein content, compared to both the no-CSF control

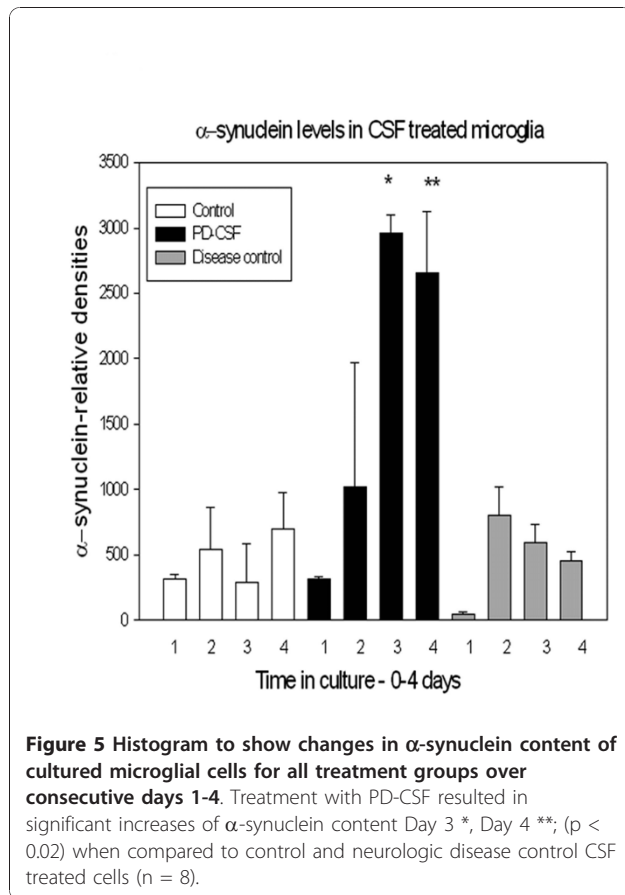


and disease control CSF treated cells by days 3 and 4 ($p \leq 0.02$).

α -synuclein content in treated astrocytes

In contrast to microglia, Figure 6 illustrates that treated astrocytes showed modest increases in α -synuclein content, with a tendency to return to pre-treatment levels without further additions of CSF. Only the PD-CSF treated cells revealed significant increases in α -synuclein, and this was much later, on day 7, than in microglia ($p \leq 0.05$). These later increases were not sustained and disappeared over the next 2-3 days. These changes are also shown in the Western blot.





α -synuclein distribution in modeled microglia and astrocyte cells

Figure 7 shows three models of cultured cells. Panels A and B are images of microglia before and after treatment with PD-CSF to definitively reveal the changes in both content and distribution of the α -synuclein. Note that treatment with PD-CSF causes the normal peripherally located protein (red; white arrows, Image A) to aggregate and become peri- or juxta-nuclear in location corresponding to the increased cellular content shown in Figure 6 (Image B). However, the astrocyte shown (Image C) still retains its component α -synuclein at a constant level and predominantly in the normal, peripheral and cytoplasm distribution patterns, even 7 days after PD-CSF treatment (blue = nucleus, DAPI probe; Green = Phalloidin-f actin; red= α -synuclein; model constructed from >30 sections: Magnification $\times 900$).

Discussion

Based on our previously reported results with cultured microglia and cytokines, we postulated that exposure of these cultured cells to PD-CSF, which has been reported to contain cytokines, would give similar results [1]. As a comparison to microglia, which play a

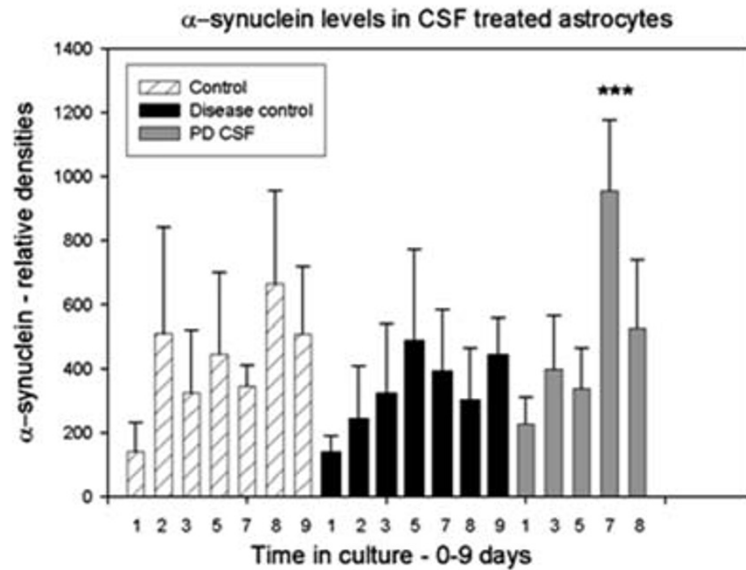
critical role in neurodegenerative disease and may well be an integral part of the immunologic cascade that occurs in PD and possibly Alzheimer's disease, we chose to culture astrocytes since they have been shown to play a protective, anti-inflammatory and signaling role in the brain [17,18,10].

We hypothesized that neuro-toxic effects from PD-CSF exposure would be specific to the individual cell types given that they have different roles in the CNS [4,19].

Interest in comparing these two essential CNS cell types was piqued by reports of microglia-astrocyte interactions in neurodegeneration and the lack of understanding of the role of astrocytes in Parkinson's disease [20,21]. We therefore undertook a localization-quantification direction in our investigations to carry out cell comparison studies, and found that there were indeed different outcomes in our two cell lines with regard to protein content and cell growth responses following treatments with PD-CSF, a fluid known to be toxic in cell cultures [14,16].

Our previous research reported the effects of cytokines on both protein aggregations in cultured cells and resulting cell viability. Results revealed that glial cells were not only deleteriously affected by sustained and high-dose cytokine treatments, but that these changes were continuous by exposure to high doses, in regard to both protein localizations and protein content [4,19]. We therefore wanted to determine the effects of PD-CSF treatments on cultured glial cells, while comparing outcomes to changes seen in cultured astrocytes.

While both cell types showed somewhat similar alterations in growth patterns, with astrocytes growing at a slower rate, dramatic changes were seen in glial cell morphology, with evidence of cellular blebbing and a much decreased growth rate, suggesting their greater susceptibility to agents such as CD14 or secreted alpha-synuclein [18,19]. Furthermore, the two cell types revealed contrasting outcomes when α -synuclein distributions were compared following exposure to PD-CSF. Astrocytes revealed minimal changes in distributions of α -synuclein, while microglial cells exhibited a marked change from a diffuse distribution pattern throughout the cytoplasm and along the plasma membrane, to a dense, peri-nuclear aggregation. Whereas astrocytes did not reveal defined changes in α -synuclein protein densities, glial cells did demonstrate increasing amounts of the protein after PD-CSF treatment, amounts that were significantly higher than those found in both control (media only) and disease control CSF treated cells on day 4 post-treatment. Additionally, these increases in α -synuclein content were concurrent with reduced glial cell growth, suggesting that the different outcomes might reflect diverse roles for α -synuclein in the two cells types and lending support to reports of over



P < 0.02 versus both Control and Neurologic control on day 3 (*) and day 4 (**)

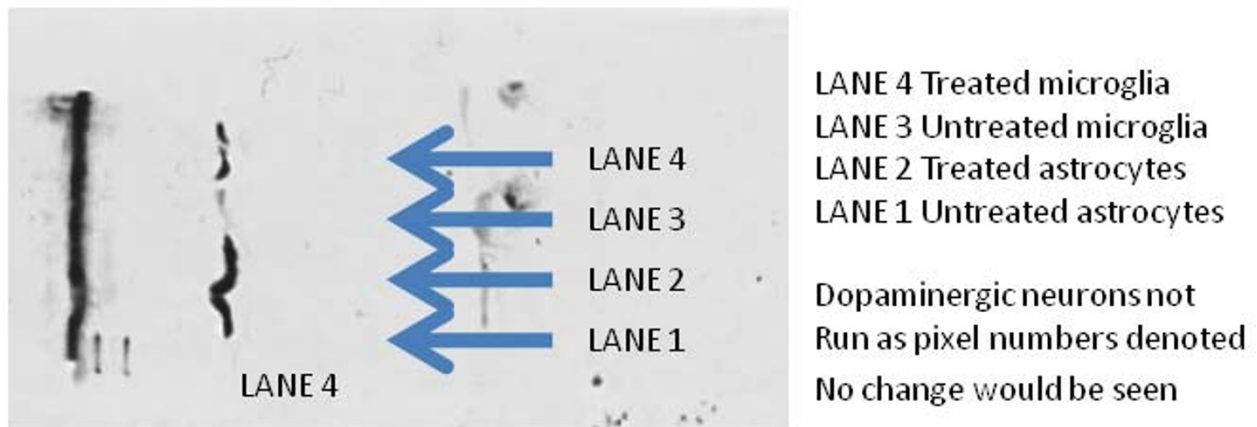
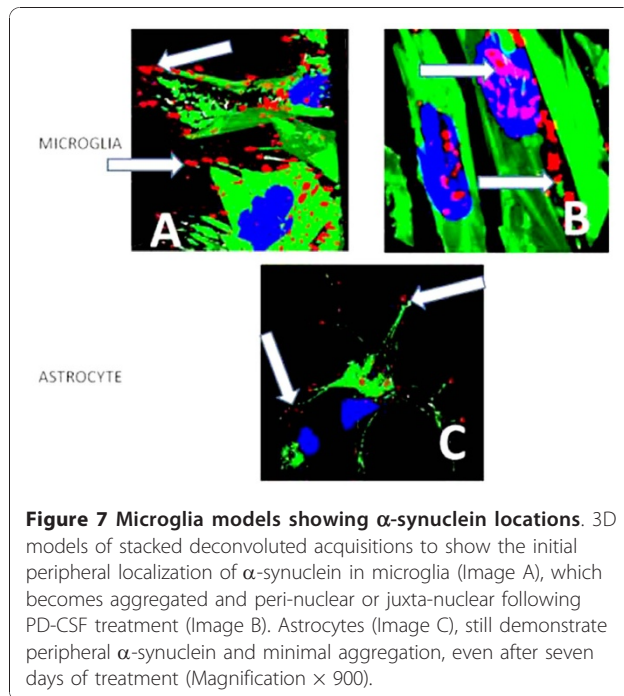


Figure 6 Histogram demonstrating changes in α-synuclein content of cultured astrocytes of all treatment groups over the course of the experiment. On day 7 there was a significant ($p < 0.05$) increase in α-synuclein content in the PD-CSF treated astrocytes, compared to the neurological disease control CSF treated cells, but all cells showed a trend to a return to baseline of α-synuclein content ($n = 8$). Western blot of protein levels is included for comparison.

expression of α-synuclein by genomic multiplications leading to Parkinsonism [21-25]. Excess α-synuclein causes deleterious effects in cultured glia, and infers disruptions in cellular machinery involved in membrane trafficking, chaperon-mediated autophagy, or via the

production of excessive amounts of reactive oxygen species leading to oxidative damage [26,27]. In contrast, astrocytes appear to be more resilient to PD-CSF assault and somewhat immune to protein aggregations, thereby suggesting that astrocyte protection of neurons might be



sustained under attacks from such factors as soluble α -synuclein, astrocyte originating prostaglandins and other noxious compounds [28-30]. These findings also give support to the possibility that astrocytes, in which α -synuclein plays a role in fatty acid uptake and trafficking, suffer dire consequences to their membrane functionality, rather than in their signaling role [23].

Due to the results of this study revealing an apparent resiliency of astrocytes, our future research will include a focus on changes in cell adhesion properties as a cause of neurodegeneration, the role of glial derived neurotrophic factor (GDNF) in PD and cellular protection, and the co-culturing of CNS cells to display neuroprotective effects of GDNF and the proactive role of astrocytes in neurodegeneration [31,32]. Isolation and identification of circulating factors involved in chronic neurological diseases is an ongoing task, but the roles of specific cells and their diverse reactions to PD-CSF treatments revealed by these comparative studies are important in not only understanding the interactions between cells in neurodegeneration, but possibly by refocusing research to pathways and mechanisms that can halt the loss of dopaminergic neurons by looking at other cell types. Sporadic PD has a variable phenotypic expression and rate of progression, no biological marker exists and as such the diagnosis is made clinically, being solely dependent on symptoms and signs of motor dysfunction from striato-nigral failure [33]. Nonetheless, our PD patient population in this study was at least seven years post their PD diagnosis and in the off medicine state when CSF was obtained, placing them

uniformly in a moderately severe stage of the disease. In order to exclude non-specific effects, we used neurological disease controls or non-PD CSF for comparison, samples that were harvested and stored similarly.

Conclusion

To summarize, these findings show that not all cell types in the CNS react in a similar manner to exposure to CSF from PD patients. The data suggest that a constituent, or constituents, specific to PD-CSF, leads to cell growth retardation and exerts specific and possibly unique effects on α -synuclein distribution and densities in multiple cell types, thus disrupting multiple pathways.

Previous results combined with those presented here, illustrate the important role α -synuclein plays in the pathology of PD and the profound changes that occur due to exposure to PD-CSF and/or cytokines [4,20]. Apparent recovery of the microglia over time suggests that the cells appear to flirt with a death pathway, but are able to overcome the low-dose/initial insult of PD-CSF and cytokine treatments, and return to a robust growth rate comparable to untreated cells. Whether this recovery is due to initiation of protective cellular mechanisms such as the release of GDNF, or to changes in the binding of toxic agents, needs further studying, particularly as a possible therapeutic concern [34].

This study reveals different responses to PD-CSF in each of two CNS cell types, with α -synuclein protein aggregations and redistribution leading to inevitable, eventual, cell death following disruptions in cell-cell communication due to loss of adhesion properties in microglia. In contrast, astrocytes, whose function is to provide endothelial support as part of the blood brain barrier, and transport fatty acids, do not succumb to PD-CSF exposure in such a deleterious and catastrophic manner and these diverse cellular responses show trends that, if properly delineated, might lead to the development of neuroprotective therapies, enhancing cell adaptation mechanisms and targeting the induction of protective and recovery pathways for improved cell survival outcomes. A role for α -synuclein in cell-cell communication and/or adhesion is implied by our findings, and provides support for the hypothesis of excess or abnormal accumulation of α -synuclein in the neurodegenerative process leading to disruption of microglia mediated cell signaling. Astrocytes on the other hand, appear to be more resistant to PD-CSF treatment, which may reflect a less critical role of α -synuclein in the normal functions of these cells, but indicates an important role in endothelial support.

Methods

Microglia cells (human brain glioblastoma cells; ATCC Grade III tumor; #HTB15) were cultured and grown to

confluency (3-5 days) in Dulbecco's Modified Eagles Medium (DMEM) containing 4 mM L-glutamine, 1.5 g/L sodium bicarbonate, 4.5 g/L glucose, 10% fetal bovine serum and 1% Penicillin/Streptomycin. Frozen cell stock was split 10 times and 6 plates from each split were used per experiment. Human astrocytes were obtained from fetal brain tissue (Clonexpress, Inc., Gaithersburg, MD) and grown to confluency (2-5 days) in 50:50 DMEM/F12 containing 5% fetal bovine serum, 1% Penicillin/Streptomycin, and 10 ng/ml of both epidermal growth factor and basic fibroblast growth factor. Astrocytes were split 5 times from frozen stock and 6 plates per split were cultured. Cells were washed with 1× phosphate buffered saline (PBS) and isolated with 0.25% trypsin/0.03% EDTA for subculturing. Cell lines were replenished with fresh media every 2 days or frozen in complete growth medium with 5% dimethyl sulfoxide for later use.

Cerebrospinal fluid (CSF)

IRB approved informed written consent was obtained for CSF samples used in this study. CSF was obtained by lumbar puncture, collected in 2 ml tubes under sterile conditions, immediately placed on dry ice, then de-identified and stored at -80°. PD-CSF came from adult men and women (age range 55-73 years; n = 13; median age 64 years, 10 men and 3 women), who were in the off-medicine state (no PD medicines ≥ 12 hours) and who had carried the diagnosis of sporadic PD for over 7 years. The diagnosis was made by a Movement Disorders specialist [33]. Disease control CSF came from adult men and women (n = 5) with an age range of 45-68 year (median age 62 years; 4 men, 1 woman) who did not have PD and had no clinical or laboratory evidence of a neurodegenerative disease, or an active infectious, inflammatory process. Non-PD neurological disease controls included patients with spastic hypertonia from late stroke, hydrocephalus, or spinal cord injury (n = 5).

Cell Growth, treatment, and cell count measures

Cells were split and grown to confluency in petri dishes containing glass cover slips, moved to dishes containing fresh culture medium and CSF was added to media at a ratio of 1:6, (1 ml CSF plus 6 ml media). On specified days, cover slips were removed from each treated group together with one untreated control, photographed using a Nikon Labphoto-2 microscope equipped with a MotiCam (Motic, Richmond, BC, Canada) at a magnification of 160× and placed on ice. Cell count stereology was via Microsoft Paint (Microsoft Corp., Redmond, WA, USA). Three fields from each treatment were imaged per experiment.

Fluorescent staining

Cover slips were probed with Texas Red for α -Synuclein, DAPI for nuclei and FITC for actin (Invitrogen-

Molecular Probes, Eugene, OR, USA). Immunofluorescence staining involved fixation in 3.7% formaldehyde, rinsing in 1× PBS, permeabilization in 0.5% Triton, followed by a 1× PBS rinse. The cover slips were incubated with 10% goat serum at 37°C for 45 minutes to decrease non-specific antibody binding. Samples were subsequently incubated with α -synuclein antibody in 10% goat serum for 30 minutes at 37°C. Secondary antibody, either a Rabbit polyclonal or a Mouse monoclonal ((Santa Cruz Biotechnology, Santa Cruz, CA, USA; Abcam, Cambridge, UK) was added to 10% Goat Serum in 0.05% Tween and incubated with the samples for 30 minutes at 37°C. Finally, the cover slips were counter-stained with DAPI/FITC for 5 minutes.

Deconvolution fluorescence microscopy

Deconvolution fluorescence microscopy and 3D image reconstructions of α -synuclein, actin and nuclei were generated as previously described [4,20,35]. Images were saved as TIFF files and treatment comparison statistical analyses (1 way ANOVA) of both cell count and α -synuclein densities (pixel numbers) were made using Corel ((Ottawa, Ontario, Canada) and SigmaStat software (SPSS, Chicago, IL, USA).

Western blot analysis

Approximately 2.0×10^6 Human Astrocytes (Cat# HAST 040, Clonexpress, Gaithersburg, MD) and Human Glioblastoma cells, U-118 MG (Cat# HTB-15, ATCC, Manassas, VA) were treated with 300 μ l of 1× sample buffer (2X = 10.0 ml of 10% SDS, 4.0 ml 1 M Tris-Cl pH = 6.8, 7.5 ml Glycerol and 45.5 ml ddH₂O) diluted 1:1 in 1× PBS and boiled for 5 minutes. Samples were sonicated for 20 minutes then centrifuged for 10 minutes at 2000 rpm (Approximately 650-850 × g). Supernatant was collected and the pellet discarded. Protein concentrations were measured with a Pierce BCA Protein Assay Kit on a Molecular Devices Spectra Max 250 (Molecular Devices, Sunnyvale, CA) reading at 562 nm. Samples were separated on a 10% polyacrylamide gel (BioRad, Hercules, CA) in a BioRad Criterion apparatus, in 1× running buffer (10X = 30 g/L Tris, 144 g/L Glycine and 10.0 g/L SDS) at 60volts for 20 minutes, another 20 minutes at 80volts, and then 100volts for 1.5 hours on ice. Proteins from the gel were transferred to a PVDF membrane (BioRad) in 1× transfer buffer (10X = 30 g/L Tris and 144 g/L Glycine) at 60volts for 1 hour on ice. The membrane was blocked with casein (Rockland Blotto Dry Milk, Gilbertsville, PA) in 1× TBS buffer (10X = 2.0 g/L KCL, 30.0 g/L Tris Base) with 1.0 ml/L Tween-20 (TTBS) overnight at 4°C with shaking. The primary antibody, Mab for Alpha-Synuclein, clone-3H2897 (Cat# sc-69977, Santa Cruz Biotechnology, Santa Cruz, CA) was diluted 1:1000 in powdered milk/TTBS and incubated with the membrane on a rocker for 3 hours

at 4°C. The membrane was washed 4 times in TTBS for 10 minutes with shaking then the secondary antibody, Goat anti-Mouse IgG-HRP (Cat# sc-2005 Santa Cruz Biotechnology) was diluted approximately 1:5000 in Casein/TTBS and incubated for 1.5 hours with shaking at 4°C. The membrane was again washed 4 times in TTBS for 10 min. with shaking, blotted dry and incubated in Pierce ECL Western Blotting Substrate (Product #32209, Thermo Scientific, Rockford, IL) at a 1:1 ratio of Luminol Enhancer:Peroxide Solution for 2 minutes, blotted dry and placed in a plastic bag. The membrane was exposed to Fisher B Plus Full Blue photographic film (Fisher, Hanover Park, IL) for 10 minutes, and then developed on a Kodak OptO Max 2000 Developer (Kodak, Rochester, NY).

Acknowledgements

This study was supported by funds from the Kanaly Foundation for Parkinson's disease Research.

Author details

¹Department of Neurology, University of Texas Medical School at Houston, Houston, Texas 77030, USA. ²Department of Neurosurgery, University of Texas Medical School at Houston, Houston, Texas 77030, USA. ³Department of Pathology and Laboratory Medicine, University of Texas Medical School at Houston, Houston, Texas 77030, USA.

Authors' contributions

MCS made substantial contributions to the conception, design, acquisition of data, analysis of data, interpretation of data and drafting the manuscript as well as final revisions. JLB conceived the study, made substantial contributions to the study design, data acquisition and data interpretation. TME made substantial contributions to the data analysis, design and manuscript writing. BJP made substantial contributions to the acquisition of data, interpretation of data, analysis of data, study design and manuscript writing. KD made substantial contributions to the concept, analysis of data, acquisition of data and interpretation of data. RJB made substantial contributions to the study design, original concept, acquisition of data, interpretation of data, analysis of data and manuscript writing. All authors read and approved the final manuscript.

Received: 4 November 2009 Accepted: 29 November 2010
Published: 29 November 2010

References

- Blum-Degen D, Müller T, Kuhn W, Gerlach M, Przuntek H, Riederer P: Interleukin-1 β and interleukin-6 are elevated in the cerebrospinal fluid of Alzheimer's and de novo Parkinson's disease patients. *Neurosci Lett* 1995, **202**:17-20.
- Mogi M, Harada M, Kondo T, Riederer P, Nagatsu T: Interleukin-2 but not basic fibroblast growth factor is elevated in parkinsonian brain. Short communication. *J Neural Transm* 1996, **103**:1077-1081.
- Mogi M, Harada M, Narabayashi H, Inagaki H, Minami M, Nagatsu T: Interleukin (IL)-1 β , IL-2, IL-4, IL-6 and transforming growth factor- α are elevated in ventricular cerebrospinal fluid in juvenile Parkinsonism and Parkinson's disease. *Neurosci Lett* 1996, **211**:13-16.
- Bick RJ, Poindexter BJ, Kott MM, Liang Y, Dinh K, Kaur B, Bick DLM, Doursout M-F, Schiess MC: Cytokines disrupt intracellular patterns of Parkinson's disease-associated proteins alpha-synuclein, tau, and ubiquitin in cultured glial cells. *Brain Res* 2008, **1217**:203-212.
- Clayton DF, George JM: The synucleins: a family of proteins involved in synaptic function, plasticity, neurodegeneration and disease. *Trends Neurosci* 1998, **21**:249-254.
- Abeliovich A, Schmitz Y, Fariñas I, Choi-Lundberg D, Ho WH, Castillo PE, Shinsky N, Verdugo JM, Armanini M, Ryan A, Hynes M, Phillips H, Sulzer D, Rosenthal A: Mice lacking α -synuclein display functional deficits in the nigrostriatal dopamine system. *Neuron* 2000, **25**:239-252.
- Kubo S, Nemani VM, Chalkley RJ, Anthony MD, Hattori N, Mizuno Y, Edwards RH, Fortin DL: A combinatorial code for the interaction of α -Synuclein with membranes. *J Biol Chem* 2005, **280**:31664-31672.
- Olanow CW, Perl DP, DeMartino GN, StP McNaught K: Lewy-body formation is an aggresome-related process: a hypothesis. *Lancet Neurol* 2004, **3**:496-503.
- Braak H, Del Tredici K, Rüb U, de Vos RAI, Jansen Steur EN, Braak E: Staging of brain pathology related to sporadic Parkinson's disease. *Neurobiol Aging* 2003, **24**:197-211.
- Lee M, Schwab C, Yu S, McGeer E, McGeer PL: Astrocytes produce the anti-inflammatory and neuroprotective agent hydrogen sulfide. *Neurobiol Aging* 2009, **30**:1523-1534.
- Mrak RE: Neuropathology and neuroinflammation idea. *J Alzheimers Dis* 2009, **18**:473-481.
- Rossi D, Volterra A: Astrocytic dysfunction: insights on the role in neurodegeneration. *Brain Res Bull* 2009.
- Braak H, Sastre M, Del Tredici K: Development of alpha-synuclein immunoreactive astrocytes in the forebrain parallels stages of intraneuronal pathology in sporadic Parkinson's disease. *Acta Neuropathol* 2007, **114**:231-241.
- Mandybur GT, Miyagi Y, Yin W, Perkins E, Zhang JH: Cytotoxicity of ventricular cerebrospinal fluid from Parkinson patients: correlation with clinical profiles and neurochemistry. *Neurol Res* 2003, **25**:104-111.
- Le WD, Rowe DB, Jankovic J, Xie W, Appel SH: Effects of cerebrospinal fluid from patients with Parkinson disease on dopaminergic cells. *Arch Neurol* 1999, **56**:194-200.
- Hao R, Norgren RB Jr, Lau YS, Pfeiffer RF: Cerebrospinal fluid of Parkinson's disease patients inhibits the growth and function of dopaminergic neurons in culture. *Neurology* 1995, **45**:138-142.
- Sugama S, Tekenuchi T, Cho BP, Joh TH, Hashimoto M, Kitani H: Possible role of microglial cells for neurotoxicity in clinical neurodegenerative disease and experimental animal models. *Inflamm Allergy Drug Targets* 2009, **8**:277-284.
- Yin GN, Jeon H, Lee S, Lee HW, Cho JY, Suk K: Role of soluble CD14 in cerebrospinal fluid as a regulator of glial functions. *J Neurosci Res* 2009, **87**:2578-2590.
- Emmanouilidou E, Melachroinou K, Roumeliotis T, Garbis SD, Ntzouni M, Margaritis LH, Stefanis L, Vekrellis K: Cell-produced alpha-synuclein is secreted in a calcium-dependent manner by exosomes and impacts neuronal survival. *J Neurosci* 2010, **30**:6838-6851.
- Dinh K, Poindexter BJ, Barnes JL, Schiess MC, Bick RJ: Fluorescence microscopy and 3D image reconstruction of cytokine initiated disruption of the Parkinson disease associated proteins alpha-synuclein, tau and ubiquitin in cultured glial cells. *Cytokine* 2009, **45**:179-183.
- McGeer PL, McGeer EG: Glial reactions in Parkinson's disease. *Mov Disord* 2008, **23**:474-483.
- Roodveldt C, Christodoulou J, Dobson CM: Immunological features of alpha-synuclein in Parkinson's disease. *J Cell Mol Med* 2008, **12**:1820-1829.
- Golovko MY, Barcelo-Coblijn G, Catagnet PI, Austin S, Combs CK, Murphy EJ: The role of alpha-synuclein in brain lipid metabolism: a downstream impact on the brain inflammatory response. *Mol Cell Biochem* 2009, **326**:55-66.
- Singleton A, Farrer M, Johnson J, Singleton A, Kachergus J, Hulihan M, Peuralinna T, Dutra A, Nussbaum R, Lincoln S, Crawley A, Hanson M, Maraganore D, Adler C, Cookson MR, Muentner M, Baptista M, Miller D, Blacato J, Hardy J, Gwinn-Hardy K: α -synuclein locus triplication causes Parkinson's disease. *Science* 2003, **302**:841.
- Fuchs J, Tichopad A, Golub Y, Munz M, Schweitzer KJ, Wolf B, Berg D, Mueller JC, Gasser T: Genetic variability in the SNCA gene influences α -synuclein levels in the blood and brain. *FASEB J* 2008, **22**:1327-1334.
- Junn E, Mouradian MM: Human α -Synuclein over-expression increases intracellular reactive oxygen species levels and susceptibility to dopamine. *Neurosci Lett* 2002, **320**:146-150.
- Yang Q, She H, Gearing M, Emanuela C, Lee M, Shacka JJ, Mao Z: Regulation of Neuronal Survival Factor MEF2D by Chaperone-Mediated Autophagy. *Science* 2009, **323**:124-127.
- Surguchov A: Molecular and cellular biology of synucleins. *Int Rev Cell Mol Biol* 2008, **270**:225-317.

29. Paleologou KE, Kragh CL, Mann DMA, Salem SA, Al-Shami R, Allsop D, Hassan AH, Jensen PH, Wi-Agnaf OMA: **Detection of elevated levels of soluble α -synuclein oligomers in post-mortem brain extracts from patients with dementia with Lewy bodies.** *Brain* 2009, **132**:1093-1011.
30. Pierre SR, Lemmens MA, Figueiredo-Pereira ME: **Subchronic infusion of the product of inflammation prostaglandin J2 models sporadic Parkinson's disease in mice.** *J Neuroinflammation* 2009, **6**:18-22.
31. Zheng J, Tang L, Zheng S, Zhan R, Zhou Y, Groudreau J, Kaufman D, Chen AF: **Delayed gene therapy of glial cell line-derived neurotrophic factor is efficacious in a rat model of Parkinson's disease.** *Molec Brain Res* 2005, **134**:155-161.
32. Dowd E, Monville C, Torres EM, Wong L, Azzouz M, Mazarakis ND, Dunnett SB: **Lentivector-mediated delivery of GDNF protects complex motor functions relevant to human Parkinsonism in a rat lesion model.** *Europe J of Neurosci* 2005, **22**:2587-2595.
33. Schiess MC, Zheng H, Soukup VM, Bonnen JG, Nauta JH: **Parkinson's disease Subtypes: Clinical Classification and Ventricular Cerebrospinal Fluid (V-CSF) Analysis.** *Parkinsonism and Related Disorders (Elsevier)* 2000, **6**:69-76.
34. Wu HM, Tzeng NS, Qian L, Wei SJ, Hu X, Chen SH, Rawls SM, Flood P, Hong JS, Lu RB: **Novel neuroprotective mechanisms of memantine: increase in neurotrophic factor release from astroglia and anti-inflammation by preventing microglial activation.** *Neuropsychopharm* 2009, **34**:2344-2357.
35. Poindexter BJ, Pereira-Smith OM, Smith JR, Buja LM, Bick RJ: **3-Dimensional reconstruction and localization of mortalin by deconvolution microscopy.** *Microsc Anal* 2002, **89**:21-23.

doi:10.1186/1471-2202-11-151

Cite this article as: Schiess *et al.*: CSF from Parkinson disease Patients Differentially Affects Cultured Microglia and Astrocytes. *BMC Neuroscience* 2010 **11**:151.

**Submit your next manuscript to BioMed Central
and take full advantage of:**

- Convenient online submission
- Thorough peer review
- No space constraints or color figure charges
- Immediate publication on acceptance
- Inclusion in PubMed, CAS, Scopus and Google Scholar
- Research which is freely available for redistribution

Submit your manuscript at
www.biomedcentral.com/submit

