

Poster presentation

Open Access

Synchrony-based integration of EEG and fMRI-BOLD in cognitive state transitions

Nathan Dees*¹, Linda Larson-Prior², Tracy Nolan², David Politte², Fred Prior² and Sonya Bahar¹

Address: ¹Center for Neurodynamics, University of Missouri – St. Louis, St. Louis, MO 63121, USA and ²Mallinckrodt Institute of Radiology, Washington University Medical School, St. Louis, MO 63110, USA

Email: Nathan Dees* - nathan.dees@umsl.edu

* Corresponding author

from Sixteenth Annual Computational Neuroscience Meeting: CNS*2007
Toronto, Canada. 7–12 July 2007

Published: 6 July 2007

BMC Neuroscience 2007, 8(Suppl 2):P136 doi:10.1186/1471-2202-8-S2-P136

© 2007 Dees et al; licensee BioMed Central Ltd.

Background

Both EEG and the blood-oxygen-dependent contrast (BOLD) signal used in fMRI are believed to reveal re-entrant signaling among complexly connected and dynamically reconfigured neural networks. As such, both signals show measurable responses to changes in global brain state. Simultaneous EEG and fMRI were collected during quiet waking rest after which subject's were asked

to fall asleep. Using stochastic phase synchronization between low frequency amplitude envelopes (<0.2 Hz) created from alpha-band (8 – 12 Hz) filtered scalp EEG data and BOLD time series calculated from regions of interest in left and right visual cortex, we examined the feasibility of integrating information contained in both these signals.

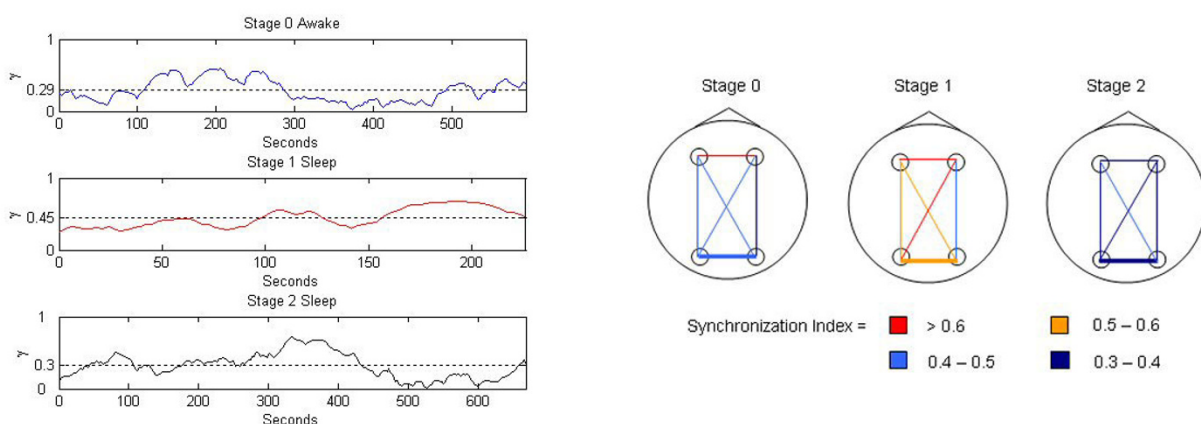


Figure 1

BOLD signal and low frequency EEG envelope data. (Left) BOLD synchronization index over time between left and right visual cortex. (Right) Regional synchronization using low frequency EEG.

Both the BOLD signal and the low frequency EEG envelope data from left and right visual cortices show increased synchronization in the descent into sleep (stage 1; Figure 1).

Conclusion

It has been suggested that low frequency oscillations (< 30 Hz) in scalp-recorded EEG organize spatially disparate regions [1] and data further suggests that slower rhythms can entrain such high frequency activity [2]. Recent data shows that low frequency oscillatory activity in the BOLD signal (< 1 Hz) correlates activity in functional neural networks. Based upon these data, we suggest that very low frequency oscillation (0.1 Hz) common to both EEG and BOLD fMRI can be used to link the temporal resolution of neurophysiological activity seen in EEG to the excellent spatial resolution of the BOLD signal to create a fuller picture of neural functional activity.

References

1. Miller R: **Theory of the normal waking EEG: From single neurons to waveforms in the alpha, beta, and gamma frequency ranges.** *Int J Psychophysiol* 2007, **64**:18-23. DOI: 10.1016/j.ijpsycho.2006.07.009
2. Canolty RT, Edwards E, Dalal SS, Soltani M, Nagarajan SS, Kirsch HE, Berger MS, Barbaro NM, Knight RT: **High gamma power is phase-locked to theta oscillations in human neocortex.** *Science* 2006, **313**(5793):1626-1628.

Publish with **BioMed Central** and every scientist can read your work free of charge

"BioMed Central will be the most significant development for disseminating the results of biomedical research in our lifetime."

Sir Paul Nurse, Cancer Research UK

Your research papers will be:

- available free of charge to the entire biomedical community
- peer reviewed and published immediately upon acceptance
- cited in PubMed and archived on PubMed Central
- yours — you keep the copyright

Submit your manuscript here:
http://www.biomedcentral.com/info/publishing_adv.asp

